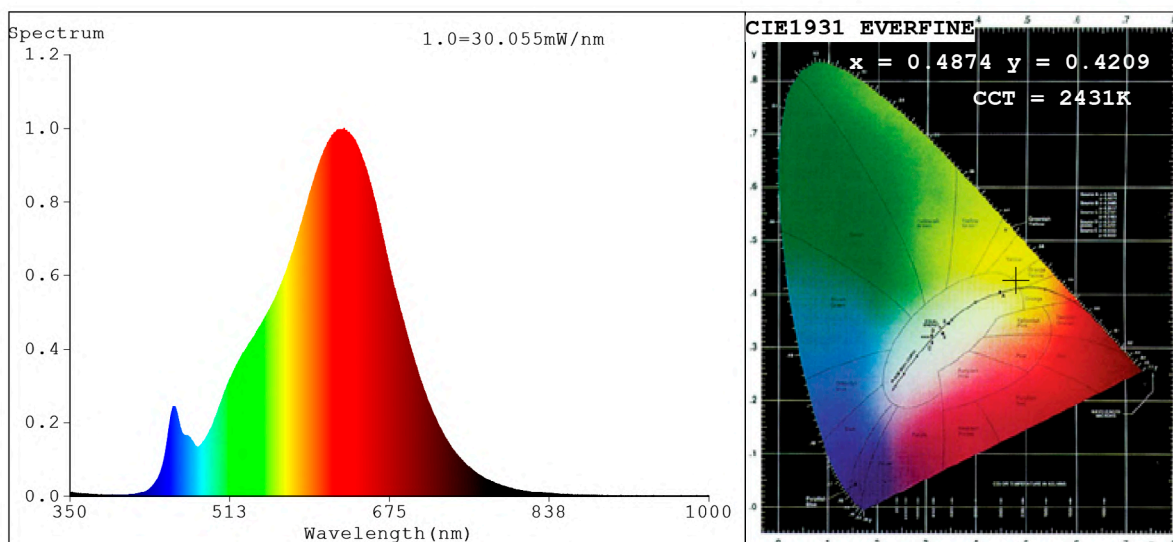


## Spectrum Test Report



### Color Parameters:

Chromaticity Coordinate:  $x=0.4874$   $y=0.4209$   $u'=0.2755$   $v'=0.5353$   
 CCT=2431K (Duv=0.0021) Dominant WL:Ld =585.1nm Purity=72.7%  
 Ratio:R=28.7% G=69.4% B=1.9%; Peak WL:Lp=629.0nm FWHM=135.2nm  
 Render Index:Ra=92.0 CRI=89.1 TM30:Rf=90 Rg=96  
 R1 =92 R2 =96 R3 =99 R4 =92 R5 =91 R6 =97 R7 =91  
 R8 =79 R9 =54 R10=90 R11=93 R12=83 R13=93 R14=99 R15=86

### Photo Parameters:

Flux = 1265 lm Eff. : 76.93 lm/W Fe = 4.661 W Scotopic:1424.4 S/P:1.1261

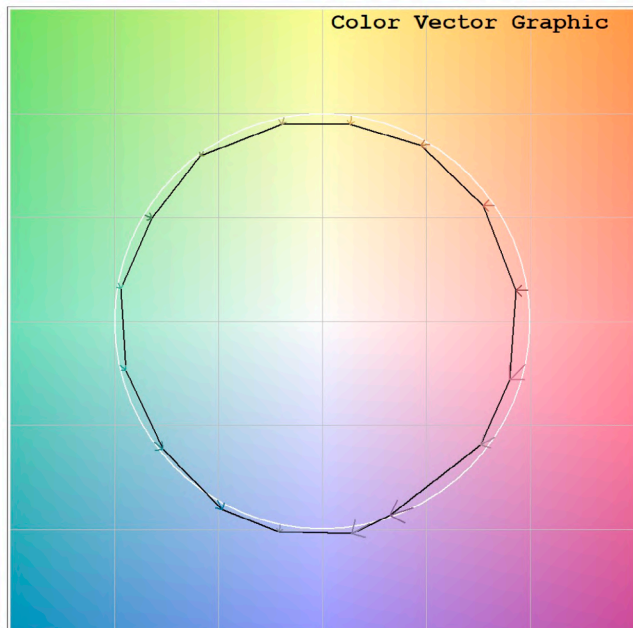
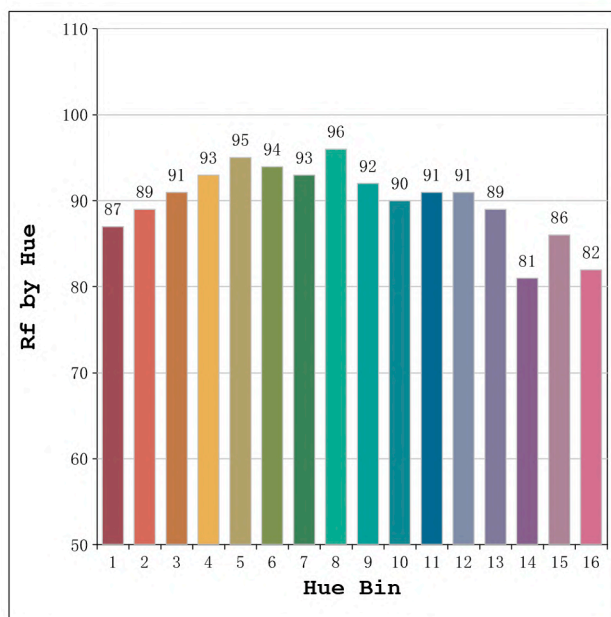
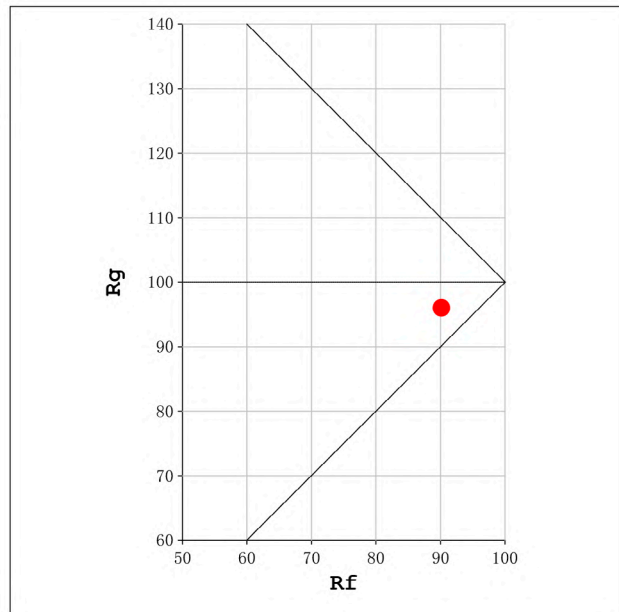
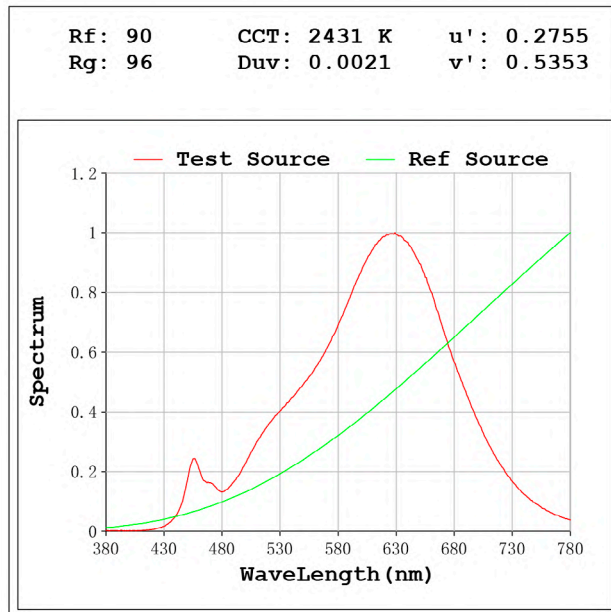
### Electrical parameters:

V = 23.998 V I = 0.6851 A P = 16.44 W PF = 1.000

Status: Integral T = 1000 ms Ip = 51455 (79%)

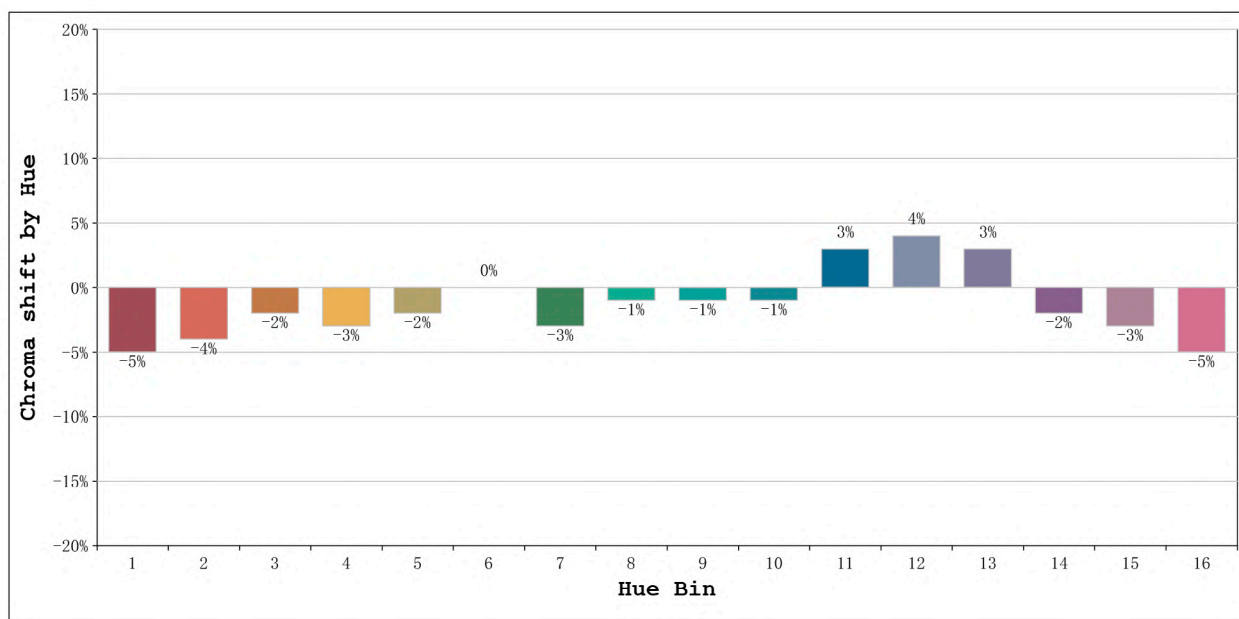
Model:Ecoled COB 2500K  
 Tester:Sergio Carneros  
 Temperature:25Deg  
 Manufacturer:Luz Negra

Number: 31.004  
 Date:25-5-2021  
 Humidity:57%  
 Remarks:100cm de tira flexible



Model:Ecoled COB 2500K  
 Tester:Sergio Carneros  
 Temperature:25Deg  
 Manufacturer:Luz Negra

Number: 31.004  
 Date:25-5-2021  
 Humidity:57%  
 Remarks:100cm de tira flexible



Hue Bin	Hue Angle	Rf	Graphic shift(%)	
			Chroma	Hue
1	0.0° - 22.5°	87	-5	1
2	22.5° - 45.0°	89	-4	3
3	45.0° - 67.5°	91	-2	3
4	67.5° - 90.0°	93	-3	0
5	90.0° - 112.5°	95	-2	2
6	112.5° - 135.0°	94	0	2
7	135.0° - 157.5°	93	-3	0
8	157.5° - 180.0°	96	-1	2
9	180.0° - 202.5°	92	-1	3
10	202.5° - 225.0°	90	-1	5
11	225.0° - 247.5°	91	3	5
12	247.5° - 270.0°	91	4	0
13	270.0° - 292.5°	89	3	-9
14	292.5° - 315.0°	81	-2	-10
15	315.0° - 337.5°	86	-3	-6
16	337.5° - 360.0°	82	-5	-8

Model:Ecoled COB 2500K  
Tester:Sergio Carneros  
Temperature:25Deg  
Manufacturer:Luz Negra

Number: 31.004  
Date:25-5-2021  
Humidity:57%  
Remarks:100cm de tira flexible